

Pilot CAP: Green Productive and Living Limburg

*About production, greening
measures and agri- environmental
schemes*

“We know a lot, but we are not doing it”



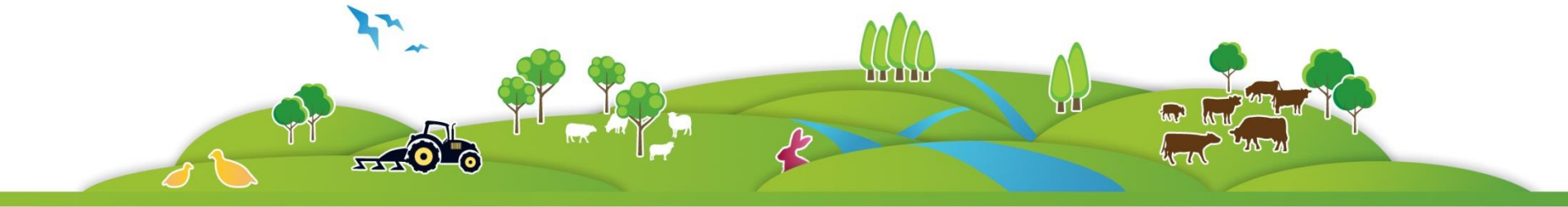
Coming-about of this pilot

- Problems agri-environmental schemes for hamster and greening measures under CAP:
 - Greening before hamster;
 - Nature-inclusive: stripper serves multiple goals;
 - CAP steers for measures, not goals;
 - Legislation from different policies works aversive



Why?

- Public demands for biodiversity and recognizability countryside
- Agri-environmental schemes: from drop on the hot plate to cherry on the cake;
- Agriculture: not a reaction on new policy but help bringing it about.



Approach

- To stimulate and demonstrate already substantiated measures
- To test on level of practicality further measures
- To place measures in a practical and integral perspective

To involve farmer and advisors around farmer



Measures

- Selection together with farmer/entrepreneur
 - Cropland
 - Dairy farming
 - Fruit cultivation
- Conditional:
 - Practicality; achievable within farming operations qua labour and risk;
 - Economical applicability; win-win measures and/or contribution market chain.



Measures

- To enhance effectivity through more consistency between:
 - Conditionality (pillar 1 CAP)
 - Eco-measures (pillar 2)
 - Agri-environmental schemes aimed at species (pillar 2)



Results

- Train de trainer;
- To easily become acquainted with measures that serve both ecology as economy
- To test practicality
- To expose bottlenecks



Goals

- Simplification of implementation of measures and (EU) enforcement: goals before measures;
- Bridging CAP greening measures and agri-environmental schemes;
- To have measures effective and applicable



But most of all

- To have (legislational) room to experiment!
- Measures cannot be thought out behind a desk and then become static
- To have science, all levels of society and farmers work together on achieving goals truthfully

